

Fencing & Sectional Building Manufacturers

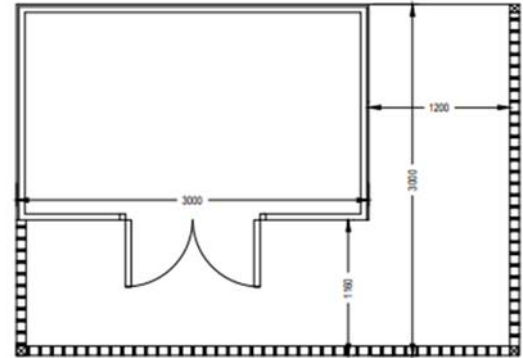
**Beach Huts
Tankerton**

Disability Adaptations

CCC-Tank-SK02 (Disability) Double doors/1.2m wide ramp

Additional supports/base for extra side (3.6m²),
pressure treated 100mmx100mm PAR newell posts on
100mmx47mm pressure treated
joists.....£1,430.00

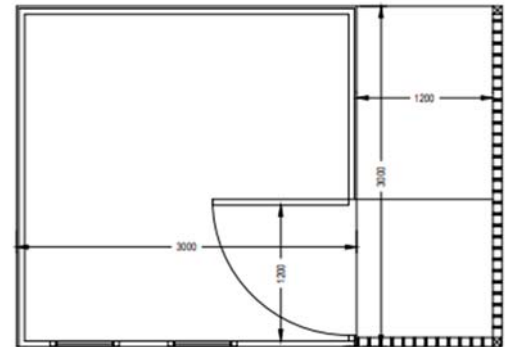
Board in base/deck in horizontal loglap or shiplap with one
vertical tongue and groove, v-joint clad
door.....£635.00



CCC-Tank-SK03 (Disability)

Additional supports/base for deck 3.6m²,
pressure treated 100mmx100mm PAR newell posts on
100mmx47mm pressure treated joists.....£1,430.00

Board in base/deck in horizontal loglap or shiplap with one
vertical tongue and groove, v-joint clad door.....£700.00
Some of these options/upgrades would require written permission
from Canterbury City Council Foreshore Services or the relevant
local authority.



Options:

- Platform base 3.1mx3.1m (building):£845.00
- Additional door in base:.....£50.00
- 1160mm set steps:.....£275.00
- 1000mm set steps:.....£200.00
- Gate including padlock:.....£120.00
- Galvanised security bar kit :£320.00
- Single opening in window – opening out shutter unit:£345.00
- Double opening in window – opening out shutter unit:.....£500.00
- 2 no 760mmx610mm fixed windows with removable shutters:.....£200.00
(or free of charge if no windows/shutters used in doors)
- Modi torch-on felt (green):.....£450.00
- Whitewood horizontal cladding to walls and ceiling with 50mm fibreglass
cavity butts to walls and 70mm PIR board to ceiling. The floor will be
- 25mm PIR board covered with 12mm plyboard:£1,325.00
- 3 Key-alike locks (mortice dead lock):.....£195.00
- Clear old hut and base (no asbestos):£580.00
- Timber day bed with lift-up lid storage (approx 1700mmx550mm),
tongue and groove, v-joint front and plyboard top with tee hinges:£240.00
- Storage cupboards/worktops: POA